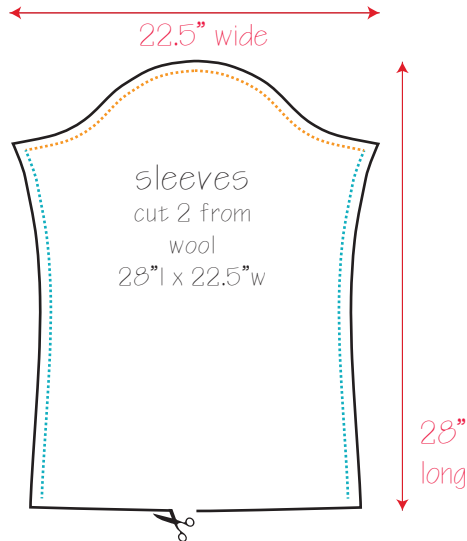


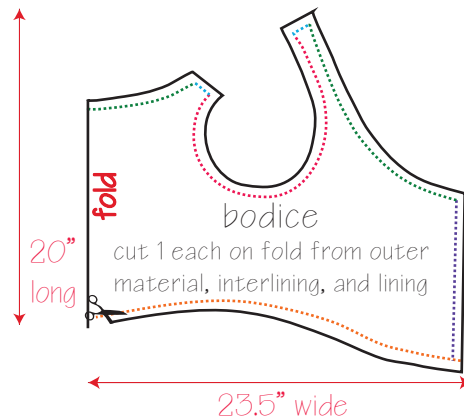
Genoveva's German Gown Pattern

For material list and assembly directions, see

<http://germanrenaissance.net/german-gown-pattern-and-assembly-notes>



Sleeve resizing notes: This sleeve is very comfortable on my arm with a 16" bicep. Measure your bicep and widen or narrow as necessary. The sleeve should come down to your knuckles when finished—my shoulder tip to knuckle measurements is 26", so measure yours and add/reduce as necessary. If you modify the sleeve cap (top edge of the sleeve), note that it has about 2" of ease in it and that you'll need to also modify the armhole on the bodice by a similar amount while retaining same ease in the sleeve cap (meaning the armhole's measurements should be 2" shorter than the sleeve cap).



Bodice resizing notes: This bodice is made just for me, so expect that you'll need to adjust it a fair amount. Measure your waist, divide it by two, and adjust the width of the pattern above by that amount. Cut the adjusted pattern out of muslin, try it on, and have a friend fine tune the pattern from there. For a more exact fit, use the instructions at <http://www.elizabethancostume.net/kirtlepat/index.html> to make a bodice, then adjust the cut lines of the straps, neckline, and waist to match those above. If your sleeve is wider or narrower than mine, you'll also need to adjust the armhole so that it matches up with the sleeve cap -- if you need help doing this, I recommend you read <http://www.threadsmagazine.com/item/5052/on-fitting--sleeves/page/all>

This German bodice is intended to have narrow straps that sit right on the edge of your shoulder.

fold

skirt
cut 1 on fold from outer material

Skirt resizing notes: The only adjustment here you must make is with the width of the cut, as mine is 42", and this produces a skirt about 40"-41" long when finished (I am 5'4" tall). So if you need a skirt longer or shorter to accommodate your height, adjust this accordingly. One simple way to do this is to use standard 60" wide fabric and don't trim it down until after you assemble your dress, and then you can hem it to your exact length at that time.

Length of fabric is determined by your waist measurement. Take your waist measurement (along bottom of bodice) and multiply it times 5. That's how much fabric you'll want for your skirt.

Tip: Save the trimmed strip of fabric to use as a guard trim on another dress!

42" wide

Also note that I have my bodice pattern a smidge wider than necessary so that I can adjust the front perfectly snug (and supporting) later in the assembly process. I find this very helpful!