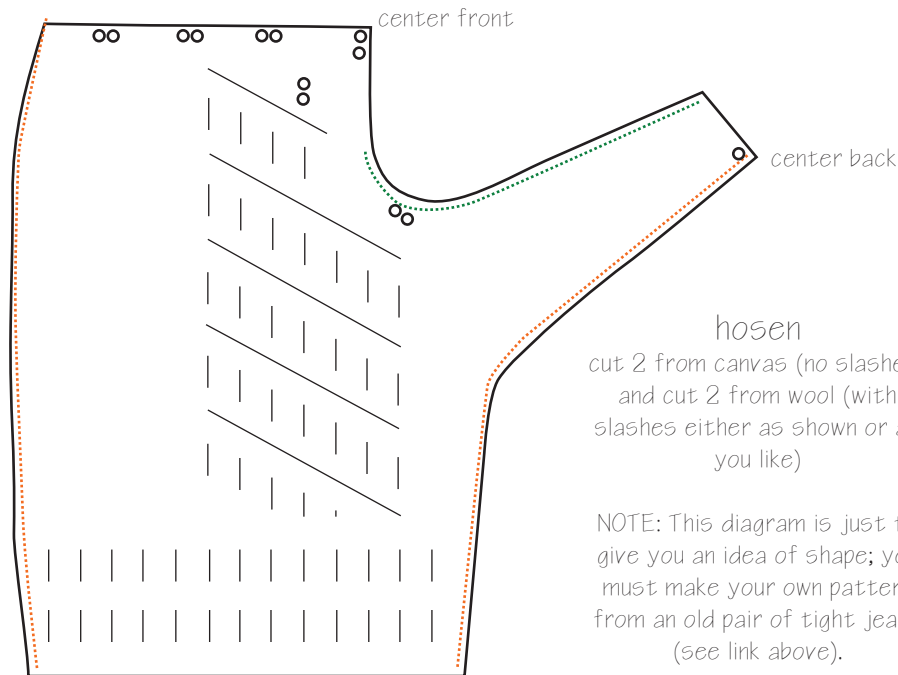


Gregor's Landsknecht Hosen Pattern

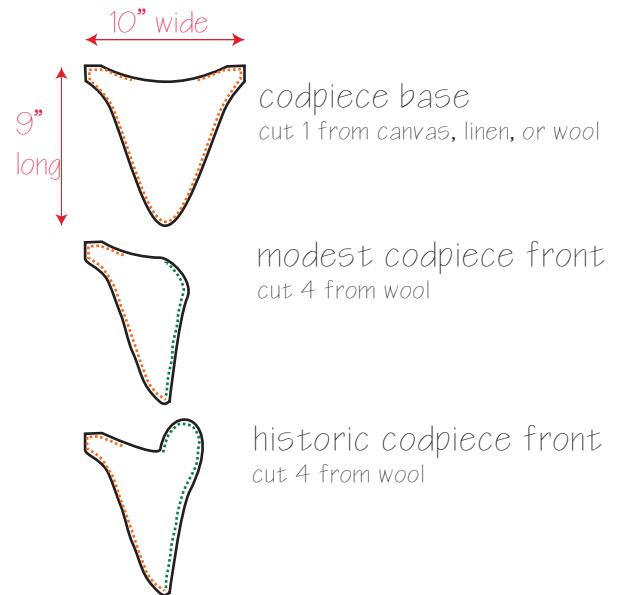
For patterning and assembly directions, see

<http://germanrenaissance.net/landsknecht-hosen-how-i-make-gregors-slashed-german-trousers-pants>



Cut four legs (two from canvas in your base color, two from wool in your contrasting color, or mix and match). Sew canvas pieces along green dotted line (flat felled seam), then along orange seam. Slash wool pieces as desired, then sew along dotted line, then along orange seam. Put wrong sides together, fold over top edges and fly, and sew down. Place eyelets at spots shown on diagram above. For the knees, pull up on the wool layer about 1" right at the knee so that the slashes curve out. Pin the wool down to the canvas layer between the two sets of slashes at the knee and sew down. Fold the edge of the wool under at the bottom, position on the canvas layer so the bottom set of slashes curves out like the top set, pin, and sew. (Note: You'll either want to fold the canvas up and sew down or cut off the excess -- you do not want the canvas to show at the bottom edge of your hosen.)

To wear your hosen, attach laces to each set of eyelets. Use laces to fasten codpiece to hosen. Step into hosen, pull up, and tie the laces to matching points on your wams (doublet). No wams? You can run a length of strong cord through all your lacing points and tie like a belt to keep them up and together, but you may want to put a sturdy leather belt on top as well.



Cut one codpiece base regardless of front style. For either front style, cut 2 from wool in primary color and cut 2 from wool in contrasting color (cut 4 total). Sew two fronts together along the green dotted line, right sides together, to make bottom front. Slash the other two front pieces as desired, then sew right sides together to make top front. Place bottom front over the top front, then place both on top of the codpiece base. Sew along the orange dotted line, leaving a 4" opening at the top. Turn inside out. Stuff with old wool or wool roving, then handstitch the top closed. Put in three hand-sewn eyelets (lacing points) as shown below (small circles), then attach to your hosen with cord strung through these eyelets to matching the lacing points on your hosen.



Note: You may need to size this down for a smaller person. Even though the codpiece only covers (not holds) the family jewels, it will still look odd (and probably be uncomfortable) if it is too large for the person.