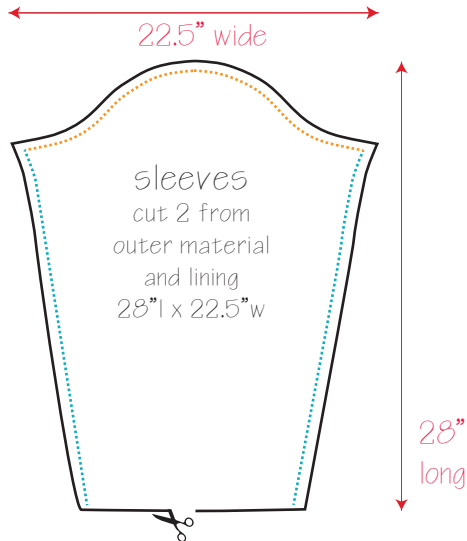
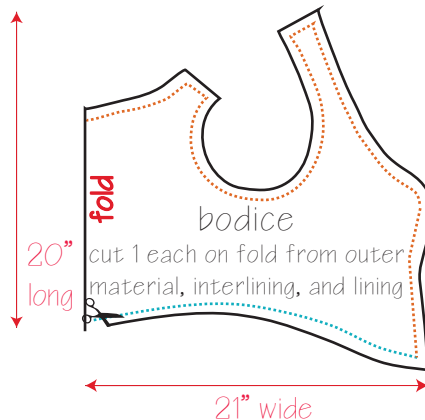
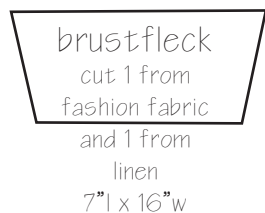
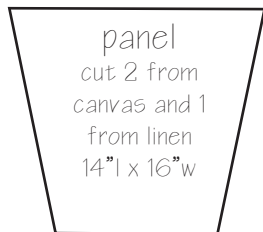


## Genoveva's Saxon Gown Pattern

Materials: Outer material of velveteen or wool,  
with bodice lining of linen and  
bodice interlining of linen or cotton canvas  
Patterns have 1/2" seam allowance factored in



Sleeve resizing notes: This sleeve is very comfortable on my arm with a 16" bicep. Measure your bicep and widen or narrow as necessary. Sleeve should come down to your knuckles when finished—my shoulder tip to knuckle measurements is 26", so measure yours and add/reduce as necessary.



Bodice resizing notes: This bodice is made just for me, so expect that you'll need to adjust it a fair amount. Measure your waist, divide it by two, subtract 3, and adjust the width of the pattern above by that amount. Cut the adjusted pattern out of muslin, try it on, and have a friend fine tune the pattern from there. For a more exact fit, use the instructions at

<http://www.elizabethancostume.net/kirtlepat/index.html> to make a bodice, then adjust the cut lines of the straps, neckline, and waist to match those above. This German bodice is intended to have straps that sit right on the edge of your shoulder.

Also note that I have my bodice pattern has a curve over the chest, which you may wish to enhance or reduce based on your chest proportions.

110" long

fold

skirt  
cut 1 on fold from outer material

Skirt resizing notes: The only adjustment here you must make is with the width of the cut, as mine is 42", and this produces a skirt about 40"-41" long when finished (I am 5'4" tall). So if you need a skirt longer or shorter to accommodate your height, adjust this accordingly. One simple way to do this is to use standard 60" wide fabric and don't trim it down until after you assemble your dress, and then you can hem it to your exact length at that time.

Tip: Save the trimmed strip of fabric to use as a guard trim on another dress!

42" wide